



Receptor RC14



Receptor RC24



Receptor RC26



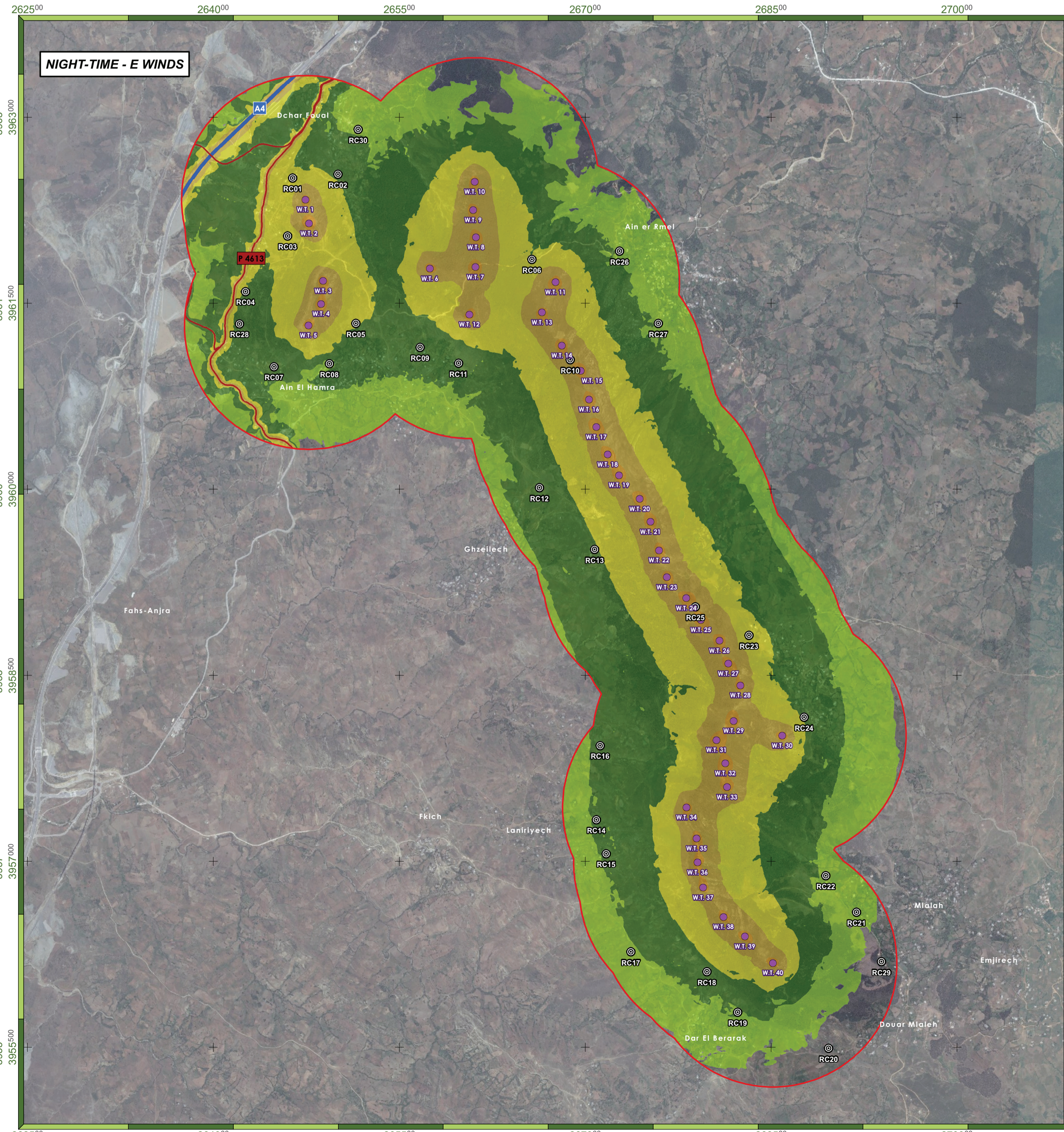
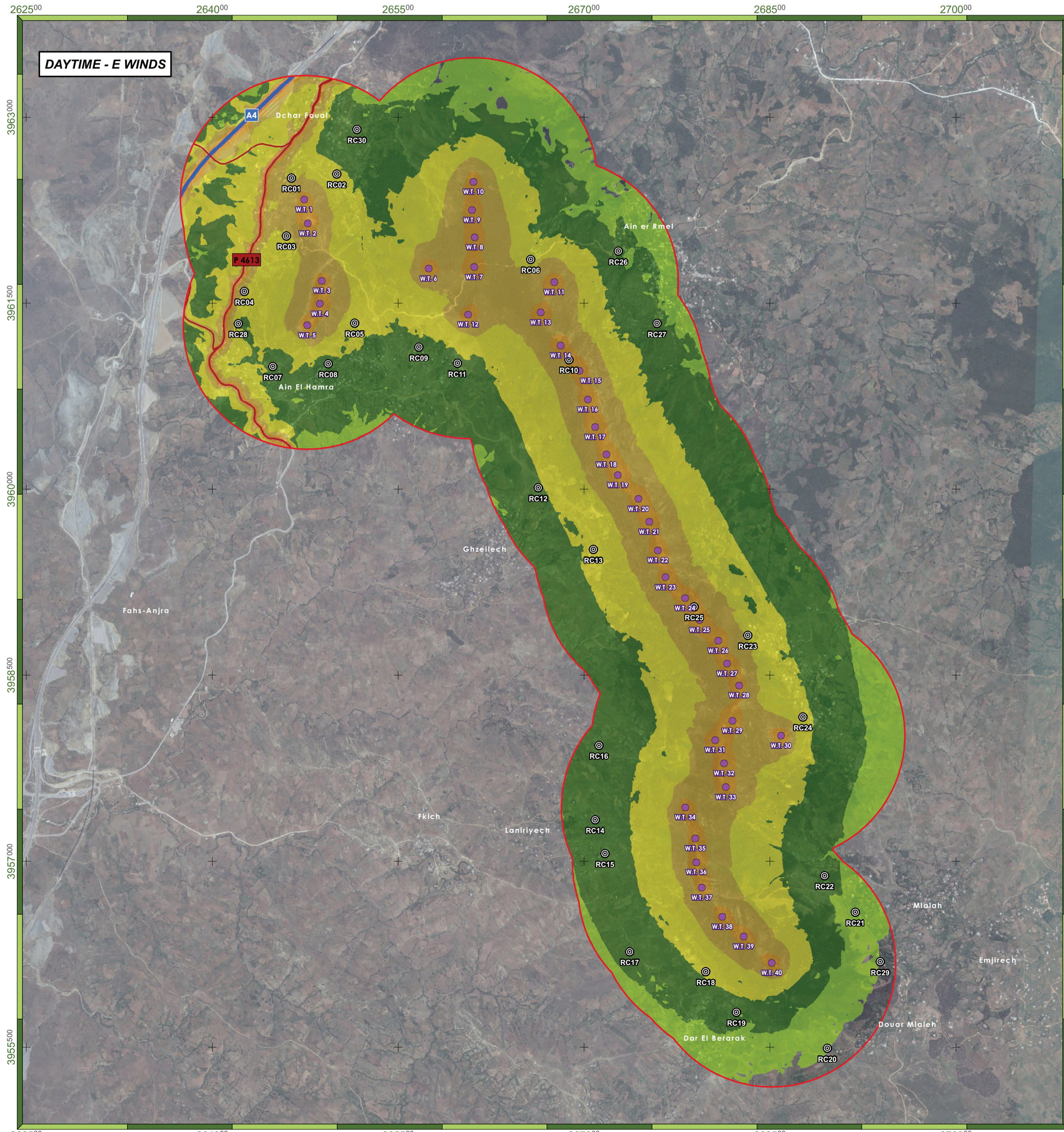
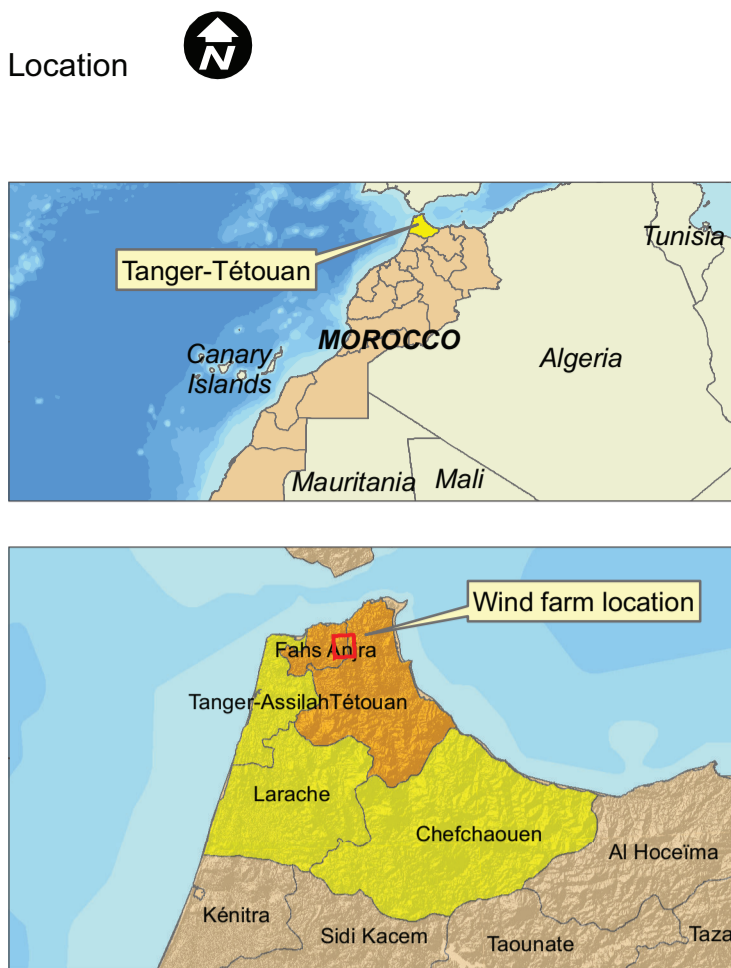
Receptor RC27



Receptor RC28

Receptor	Sound Pressure Levels*		Receptor	Sound Pressure Levels*	
	Daytime	Night-time		Daytime	Night-time
R-01	47,80	45,80	R-16	42,80	40,80
R-02	47,50	45,50	R-17	41,60	39,60
R-03	48,90	46,90	R-18	45,80	43,80
R-04	43,50	41,50	R-19	42,40	40,40
R-05	47,30	45,30	R-20	36,40	34,40
R-06	49,10	47,10	R-21	39,90	37,90
R-07	43,00	41,00	R-22	42,70	40,70
R-08	41,80	39,80	R-23	49,30	47,30
R-09	44,50	42,50	R-24	45,90	43,90
R-10	56,20	54,20	R-25	56,90	54,90
R-11	44,10	42,10	R-26	42,10	40,10
R-12	44,80	42,80	R-27	40,80	38,80
R-13	46,80	44,80	R-28	42,40	40,40
R-14	42,30	40,30	R-29	37,00	35,00
R-15	42,70	40,70	R-30	41,70	39,70

Receptors' projected sound pressure levels of Khalladi wind farm. Main Wind direction E
 * Projected values from Cadna-A software (baseline noise not considered)



Legend

- Wind turbines
- Buffer 1km
- Noise receptors

Sound Pressure Level (Leq)
 UNE ISO 1996:2 (2009)

- < 35 dBA
- 35 - 40 dBA
- 40 - 45 dBA
- 45 - 50 dBA
- 50 - 55 dBA
- 55 - 60 dBA
- 60 - 65 dBA
- 65 - 70 dBA
- 70 - 75 dBA
- 75 - 80 dBA
- 80 - 85 dBA
- > 85 dBA

Roads
 Highway

Client: 5Capitals Environmental & Management Consulting
 Consultancy: TAXUS

Project: PRELIMINARY ENVIRONMENTAL ASSESSMENT OF THE KHALLADI WIND FARM

Designation: Sound Pressure Levels
 Main Wind Condition - Projected Stage G=1

Drawing n° 2 Author: [Signature]

Designed by: J. Rodriguez 02/02/15
 Checked by: E. Montes 02/02/15
 Approved by: J. Granero 03/02/15

Scale: 1:24.000