

الملحق 1، أرقام

الرقم 9 - 1 الوصول المسار القائمة في المنطقة المقترحة لفرعية



الرقم 9 - 2 القائمة خط كهربائي قرب المحطة الفرعية المقترحة



الرقم 9 - 3 Khalladi مزرعة رياح الموقع



الموائل الشكل 9-4 MAQUIS بالقرب المقترح خط كهربائي



الرقم 9 - 5 خط كهربائي ممر أبراج 68-70



الرقم 9 - 6 خط كهربائي ممر أبراج 68-75



الرقم 9 - 7 خط كهربائي ممر أبراج 60-67





الشكل 8-9 خط كهربائي ممر أبراج 50-56



الرقم 9-9 خط كهربائي ممر أبراج 47-50



الرقم 9-10 خط كهربائي ممر أبراج 43-44



الرقم 9-11 خط كهربائي ممر أبراج 40-42



الشكل 9-12 خط كهربائي ممر أبراج 38-39



الرقم 9-13 خط كهربائي ممر أبراج 37-39



الرقم 9-14 خط كهربائي ممر أبراج 34-35





الشكل 9-15 خط كهربائي ممر أبراج 27-29



الرقم 9-16 خط كهربائي ممر أبراج 27-29، من وجهة البعيدة.



الرقم 9-17 خط كهربائي ممر أبراج 23-26



الرقم 9-18 خط كهربائي ممر أبراج 19-22



الشكل 9-19 خط كهربائي ممر أبراج 13-16 ، ، و PL القائمة.



الرقم 9-20 خط كهربائي ممر أبراج 13/10 ، ، و PL القائمة.



الرقم 9-21 خط كهربائي ممر أبراج 10/08 ، ، و PL القائمة.



الرقم 9-22 خط كهربائي ممر أبراج 10/05



الرقم 9-23 خط كهربائي ممر أبراج 5-1

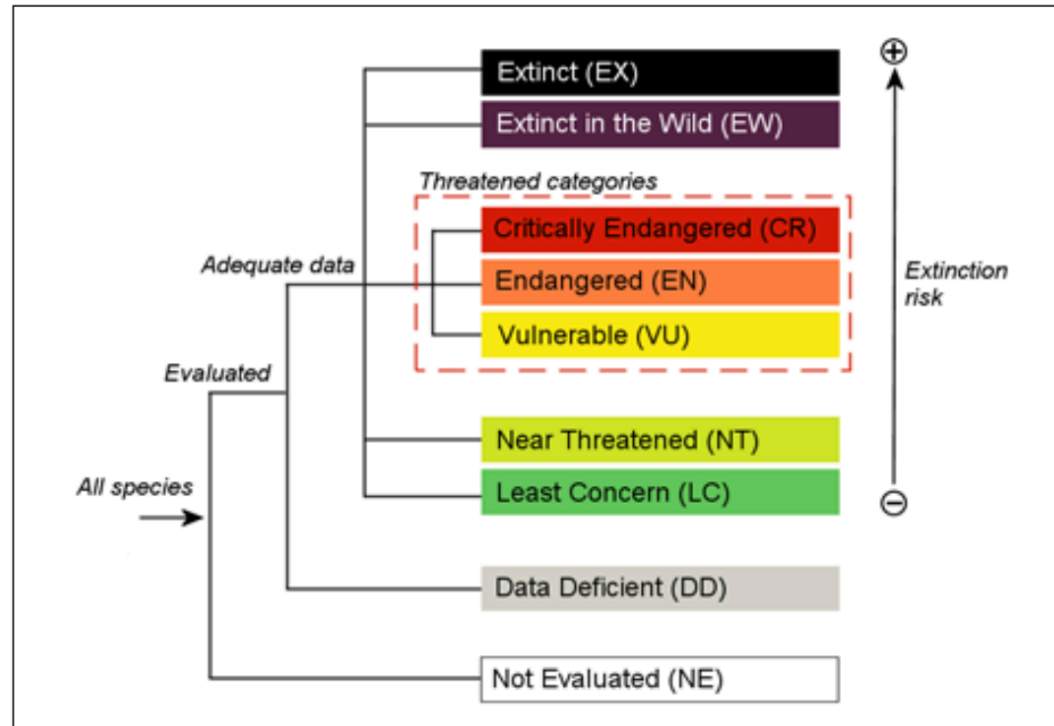




الملحق 2. الأنواع FLORA المحددة ضمن في خط كهربائي Jbel SENDOUQ AND THE ALIGNMENT

The IUCN Red List Categories and Criteria are intended to be an easily and widely understood system for classifying species at high risk of global extinction.

The IUCN Red List is categorized in the following Categories:



- Extinct (EX):** A taxon is Extinct when there is no reasonable doubt that the last individual has died. A taxon is presumed Extinct when exhaustive surveys in known and/or expected habitat, at appropriate times (diurnal, seasonal, annual), throughout its historic range have failed to record an individual. Surveys should be over a time frame appropriate to the taxon's life cycle and life form.



- **Extinct in the Wild (EW):** A taxon is Extinct in the Wild when it is known only to survive in cultivation, in captivity or as a naturalized population (or populations) well outside the past range. A taxon is presumed Extinct in the Wild when exhaustive surveys in known and/or expected habitat, at appropriate times (diurnal, seasonal, annual), throughout its historic range have failed to record an individual. Surveys should be over a time frame appropriate to the taxon's life cycle and life form.
- **Critically endangered (CR):** A taxon is Critically Endangered when the best available evidence indicates that it meets any of the criteria A to E for Critically Endangered, and it is therefore considered to be facing an extremely high risk of extinction in the wild.
- **Endangered (EN):** A taxon is endangered when the best available evidence indicates that it meets any of the criteria A to E for Endangered and it is therefore considered to be facing a very high risk of extinction in the wild.
- **Vulnerable (V):** A taxon is Vulnerable when the best available evidence indicates that it meets any of the criteria A to E for Vulnerable and it is therefore considered to be facing a high risk of extinction in the wild.
- **Near Threatened (NT):** A taxon is Near Threatened when it has been evaluated against the criteria but does not qualify for Critically Endangered, Endangered or Vulnerable now, but is close to qualifying for or is likely to qualify for a threatened category in the near future.
- **Least Concern (LC):** A taxon is Least Concern when it has been evaluated against the criteria and does not qualify for Critically Endangered, Endangered, Vulnerable or Near Threatened. Widespread and abundant taxa are included in this category.
- **Data Deficient (DD):** A taxon is Data Deficient when there is inadequate information to make a direct, or indirect, assessment of its risk of extinction based on its distribution and/or population status. A taxon in this category may be well studied, and its biology well known, but appropriate data on abundance and/or distribution are lacking. Data Deficient is therefore not a category of threat. Listing of taxa in this category indicates that more information is required and acknowledges the possibility that future research will show that threatened classification is appropriate. It is important to make positive use of whatever data are available. In many cases great care should be exercised in choosing between DD and a threatened status. If the range of a taxon is suspected to be relatively circumscribed, and a considerable period of time has elapsed since the last record of the taxon, threatened status may well be justified.
- **Not Evaluated (NE):** A taxon is Not Evaluated when it has not yet been evaluated against the criteria.

For more information about IUCN Red List Categories please check this [Link](#).

The following documents, *Catalogue Des Plantes Vasculaires Rares, Menacées Ou Endémiques Du Maroc*, (Fennane et al, 1998) and *Flore Vasculaire Du Maroc : Inventaire Et Chorologie* (Fennane et al, 2005), were used in order to specify each of the categories of flora species identified onsite.

The Catalogue (Fennane et al, 1998) classifies the degree of rarity with the following symbols:

- RR very rare; number of known locations <5
- RR? Suspected very rare.
- R? Suspected rare.
- R uncommon
- ?? Taxon suspected to be present.
- V vulnerable (or seems to be), decreasing and could become scarce in the short term.

**Table Error! No text of specified style in document.-1 Flora species located within the study area.**

Family	Genus/Species	Common Name	IUCN Red List	Conservation Status in Morocco	Jbel Sendouq, 2010	PL Alignment, 2015
Alliaceae	Allium pallens L. var. pallens	Unpublished name	DD		Yes	
	Allium pallens L. var. grandiflorum	Unpublished name	DD		Yes	
	Allium triquetrum L.	Three-cornered leek	NE		Yes	
Amaryllidaceae	Acis autumnalis (L.)	Unpublished name	LC		Yes	
Amaranthaceae	Amaranthus blitoides S.	Prostrate amaranth	NE		Yes	
	Amaranthus deflexus L.	Large-fruit amaranth	NE		Yes	
Anacardiaceae	Pistacia lentiscus L.	Mastic	NE		Yes	Yes
Araceae	Arisarum simorrhinum Durieu	Unpublished name	NE		Yes	
Arecaceae	Chamaerops humilis L.	European fan palm	NE		Yes	Yes
Asphodelaceae	Asphodelus ramosus L.	Branched asphodel	NE		Yes	
	Asphodelus roseus Humbert & Maire	Unpublished name	NE	R?	Yes	
Asteraceae	Anacyclus radiatus Loisel. subsp. Radiatus	Unpublished name	NE		Yes	
	Andryala cedretorum Maire	Unpublished name	NE	RR	Yes	
	Bellis pappulosa DC.	Unpublished name	NE		Yes	
	Bellis sylvestris Cirillo	Southern Daisy	NE		Yes	
	Carlina hispanica Lam.	Unpublished name	NE		Yes	



Family	Genus/Species	Common Name	IUCN Red List	Conservation Status in Morocco	Jbel Sendouq, 2010	PL Alignment, 2015
	<i>Carlina racemosa</i> L.	Unpublished name	NE		Yes	Yes
	<i>Centaurea melitensis</i> L.	Unpublished name	NE		Yes	
	<i>Centaurea sphaerocephala</i> L. subsp. <i>polyacantha</i> (Willd.) Dostál	Unpublished name	NE		Yes	
	<i>Chamaemelum fuscatum</i> (Brot.) Vasc. f. <i>minor</i> (Hoffmanns. & Link) Benedi	Unpublished name	NE		Yes	
	<i>Cladanthus mixtus</i> (L.) Chevall.	Unpublished name	NE		Yes	
	<i>Dittrichia viscosa</i> (L.) Greuter	Unpublished name	NE		Yes	
	<i>Filago gallica</i> L.	Narrowleaf cottonrose	NE		Yes	
	<i>Gnaphalium antillanum</i> Urb.	Unpublished name	NE		Yes	
	<i>Pulicaria odora</i> (L.) Rchb.	Mediterranean Fleabane	NE		Yes	
	<i>Rhaponticoides africana</i> (Lam.) M. V. Agab. & Greuter	Unpublished name	NE		Yes	
	<i>Rhaponticum longifolium</i> (Hoffmanns. & Link) Soskov subsp. <i>ericeticola</i> (Font Quer) Greuter	Unpublished name	NE	RR	Yes	
	<i>Scorzoneroides salzmannii</i> (Sch. Bip.) Greuter & Talavera	Unpublished name	NE		Yes	
	<i>Tolpis umbellata</i> Bertol.	Unpublished name	NE		Yes	
Asteraceae	<i>Crepis tingitana</i> Ball	Unpublished name	NE		Yes	
	<i>Crepis vesicaria</i> L. subsp. <i>taraxacifolia</i> (Thuill.) Thell.	Beaked hawk's beard	NE		Yes	
	<i>Cynara cardunculus</i> L.	Artichoke thistle	NE		Yes	Yes
	<i>Filago minima</i> (Sm.) Pers.(R)	Unpublished name	NE		Yes	
	<i>Galactites tomentosa</i> Moench	Purple Milk Thistle	NE		Yes	
	<i>Glebionis coronaria</i> (L.) Spach	Garland chrysanthemum	NE		Yes	
	<i>Helminthotheca echioides</i> (L.) Holub	Bristly oxtongue	NE		Yes	
	<i>Hyoseris radiata</i> L.	Unpublished name	NE		Yes	
	<i>Hypochoeris glabra</i> L.	Unpublished name	NE		Yes	
	<i>Hypochoeris radicata</i> L.	Unpublished name	NE		Yes	
	<i>Hypochoeris salzmanniana</i> DC.	Unpublished name	NE		Yes	
	<i>Klasea baetica</i> (DC.) Holub subsp. <i>Alcalae</i>	Unpublished name	NE	RR	Yes	
	<i>Leontodon saxatilis</i> Lam. subsp. <i>perennis</i> (Emberger & Maire) Maire	Lesser hawkbit	NE		Yes	
	<i>Leontodon tingitanus</i> (Boiss. & Reuter) Ball	Unpublished name	NE		Yes	
	<i>Mantiscalca salmantica</i> (L.) Briq. & Cavill.	Unpublished name	NE		Yes	
<i>Otospermum glabrum</i> (Lag.) Willk.	Unpublished name	NE		Yes		

Family	Genus/Species	Common Name	IUCN Red List	Conservation Status in Morocco	Jbel Sendouq, 2010	PL Alignment, 2015
	<i>Sonchus asper</i> (L.) Hill.	Unpublished name	NE		Yes	
	<i>Sonchus oleraceus</i> L.	Unpublished name	NE		Yes	
Boraginaceae	<i>Echium plantagineum</i> L.	Unpublished name	NE		Yes	
	<i>Echium sabulicola</i> Pomel	Unpublished name	NE		Yes	
	<i>Lithodora prostrata</i> (Loisel.) Griseb. subsp. <i>lusitanica</i> (Samp.) Valdés	Unpublished name	NE		Yes	
Brassicaceae	<i>Erucastrum varium</i> (Durieu) Durieu	Unpublished name	NE		Yes	
	<i>Sinapis arvensis</i> L. subsp. <i>Arvensis</i>	Unpublished name	NE		Yes	
Campanulaceae	<i>Campanula rapunculus</i> L.	Unpublished name	NE		Yes	
	<i>Jasione corymbosa</i> Schult.	Unpublished name	NE		Yes	
	<i>Jasione montana</i> L.	Unpublished name	NE		Yes	
	<i>Solenopsis laurentia</i> (L.) C. Presl	Unpublished name	NE		Yes	
Cannabaceae	<i>Cannabis sativa</i> L.	Hemp	NE		Yes	
Caprifoliaceae	<i>Lonicera</i> sp.	Unpublished name	NE		Yes	
Caryophyllaceae	<i>Cerastium glomeratum</i> Thuill.	Sticky chickweed	NE		Yes	
	<i>Moehringia trinervia</i> (L.) Clairv. subsp. <i>pentandra</i> (Gay) Nyman	Three-nerved Sandwort	NE		Yes	
	<i>Moenchia erecta</i> (L.) P. Gaertner & al. subsp. <i>octandra</i> Coutinho	Upright chickweed	NE		Yes	
	<i>Paronychia echinulata</i> Chater	Eurasian nailwort	NE		Yes	
	<i>Polycarpon tetraphyllum</i> (L.) L.	Four-leaved Allseed	NE		Yes	
	<i>Silene gallica</i> L.	Common catchfly	NE		Yes	
	<i>Spergula arvensis</i> L. subsp. <i>Arvensis</i>	Corn spurry	NE		Yes	
	<i>Stellaria media</i> (L.) Vill.	Chickweed	NE		Yes	
Chenopodiaceae	<i>Chenopodium album</i> L.	Lamb's quarters	NE		Yes	
	<i>Chenopodium ambrosoides</i> L.	Epazote	NE		Yes	
	<i>Chenopodium murale</i> L.	Nettleleaf Goosefoot	NE		Yes	
Cistaceae	<i>Cistus creticus</i> L.	Cretan rockrose	NE		Yes	
	<i>Cistus crispus</i> L.	Unpublished name	NE		Yes	
	<i>Cistus ladanifer</i> L. subsp. <i>africanus</i> Dansereau	Gum rockrose	NE		Yes	Yes
	<i>Cistus ladanifer</i> L. subsp. <i>africanus</i> Dansereau	Gum rockrose	NE		Yes	Yes
	<i>Cistus ladanifer</i> L. subsp. <i>africanus</i> Dansereau	Gum rockrose	NE		Yes	Yes
	<i>Cistus populifolius</i> L. subsp. <i>major</i> (Dunal) Heywood	Unpublished name	NE	R?	Yes	
	<i>Cistus salviifolius</i> L.	Unpublished name	NE		Yes	



Family	Genus/Species	Common Name	IUCN Red List	Conservation Status in Morocco	Jbel Sendouq, 2010	PL Alignment, 2015
	<i>Halimium halimifolium</i> (L.) Willk.	Unpublished name	NE		Yes	
	<i>Halimium halimifolium</i> (L.) Willk. subsp. <i>multiflorum</i> (Salzm. Ex Dunal) Maire	Unpublished name	NE		Yes	Yes
	<i>Tuberaria guttata</i> (L.) Fourr. subsp. <i>Guttata</i>	Unpublished name	NE		Yes	
	<i>Tuberaria macrosepala</i> Cosson	Unpublished name	NE		Yes	
	<i>Tuberaria lignosa</i> (Sweet) Samp.	Perennial Spotted Rockrose	NE		Yes	
Convolvulaceae	<i>Convolvulus arvensis</i> L.	Field bindweed	NE		Yes	
Crassulaceae	<i>Umbilicus rupestris</i> (Salisb.) Dandy	Unpublished name	NE		Yes	
Cucurbitaceae	<i>Bryonia dioica</i> Jacq.	Unpublished name	NE		Yes	
Cyperaceae	<i>Carex distachya</i> Desf.	Unpublished name	LC		Yes	
	<i>Carex divulsa</i> Stokes	Unpublished name	NE		Yes	
	<i>Carex muricata</i> L. subsp. <i>pairaei</i> (F.W. Schultz) Asch. & Graentner	Unpublished name	NE		Yes	
	<i>Carex oedipostyla</i> Duval-Jouve	Unpublished name	LC	RR	Yes	
	<i>Carex viridula</i> Michx	Unpublished name	NE	RR	Yes	
	<i>Cyperus longus</i> L.	Unpublished name	LC	R	Yes	
	<i>Cyperus rotundus</i> L.	Nut-grass	LC		Yes	
	<i>Eleocharis multicaulis</i> (Sm.) Desv.	Unpublished name	NE	V	Yes	
	<i>Fuirena pubescens</i> (Poiret) Kunth	Unpublished name	LC	RR	Yes	
	<i>Schoenus nigricans</i> L.	Black Bog-rush	LC		Yes	
	<i>Scirpoides holoschoenus</i> (L.) Sojak	Round-headed Club rush	LC		Yes	
Dipsacaceae	<i>Sisalix atropurpurea</i> (L.) Greuter & Burdet	Unpublished name	NE		Yes	
Droseraceae	<i>Drosophyllum lusitanicum</i> (L.)	Unpublished name	NE	RR	Yes	
Ericaceae	<i>Arbutus unedo</i> L.	Strawberry tree	NE		Yes	
	<i>Calluna vulgaris</i> (L.) Hull®	Common heather	NE	R	Yes	
	<i>Erica arborea</i> L.	Root heather	NE		Yes	
	<i>Erica australis</i> L.	Spanish tree heath	NE	RR	Yes	
	<i>Erica ciliaris</i> L.	Dorset Heath	NE	R	Yes	
	<i>Erica scoparia</i> L. subsp. <i>Scoparia</i>	Besom Heath	NE		Yes	
	<i>Erica umbellata</i> L.	Unpublished name	NE		Yes	
Euphorbiaceae	<i>Euphorbia exigua</i> L.	Unpublished name	NE		Yes	

Family	Genus/Species	Common Name	IUCN Red List	Conservation Status in Morocco	Jbel Sendouq, 2010	PL Alignment, 2015
	<i>Euphorbia helioscopia</i> L.	Sun spurge	NE		Yes	
	<i>Euphorbia sulcata</i> Loisel.	Unpublished name	NE		Yes	
	<i>Mercurialis ambigua</i> L. f.	Unpublished name	NE		Yes	
	<i>Calicotome infesta</i> (C. Presl) Guss. subsp. <i>intermedia</i> (C. Presl) Greuter	Unpublished name	NE		Yes	
	<i>Calicotome villosa</i> (Poiret) Link	Spiny Broom	NE	R?	Yes	
	<i>Genista triacanthos</i> Brot. subsp. <i>triacanthos</i>	Unpublished name	NE	R	Yes	Yes
	<i>Genista tridens</i> (Cav.) DC	Unpublished name	NE	R	Yes	Yes
	<i>Genista tridens</i> (Cav.) DC. subsp. <i>juniperina</i> (Spach) Talavera & Gibbs	Unpublished name	NE	RR	Yes	Yes
	<i>Lotus palustris</i> Willd.	Unpublished name	LC		Yes	
	<i>Lotus parviflorus</i> Desf.	Unpublished name	NE		Yes	
	<i>Medicago polymorpha</i> L.	California burclover	NE		Yes	
	<i>Ononis</i> sp.	Unpublished name	NE		Yes	
	<i>Ornithopus compressus</i> L.	Yellow serradella	NE		Yes	
	<i>Ornithopus pinnatus</i> (Miller) Druce	Unpublished name	NE		Yes	
	<i>Genista tridentata</i> (L.) Willk.	Unpublished name	LC		Yes	Yes
	<i>Scorpiurus</i> sp.	Unpublished name	NE		Yes	
	<i>Stauracanthus boivinii</i> (Webb) Samp.	Unpublished name	NE		Yes	
	<i>Trifolium angustifolium</i> L.	Cow Clover	LC		Yes	
	<i>Trifolium angustifolium</i> L. subsp. <i>intermedium</i> (Hoffmanns. & Link) Coutinho	Cow Clover	LC		Yes	
	<i>Trifolium arvense</i> L. ; AA HA MA Mam Man LM R	Haresfoot Clover	NE		Yes	
	<i>Trifolium campestre</i> Schreber	Unpublished name	NE		Yes	
	<i>Trifolium gemellum</i> Willd. subsp. <i>Gemellum</i>	Spanish Clover	NE		Yes	
	<i>Trifolium hybridum</i> L. subsp. <i>elegans</i> (Savi) Ascherson & Graebner	Alsike clover	NE	RR	Yes	
	<i>Trifolium scabrum</i> L.	Rough Clover	LC		Yes	
	<i>Trifolium stellatum</i> L.	Narrow Clover	NE		Yes	
	<i>Trifolium subterraneum</i> L.	Subterranean clover	LC		Yes	
	<i>Vicia angustifolia</i> L.	Unpublished name	NE		Yes	
Fagaceae	<i>Quercus coccifera</i> L.	Kermes oak	NE		Yes	Yes



Family	Genus/Species	Common Name	IUCN Red List	Conservation Status in Morocco	Jbel Sendouq, 2010	PL Alignment, 2015
	<i>Quercus faginea</i> Lam.	Portuguese oak	NE		Yes	
	<i>Quercus suber</i> L.	Corck Oak	NE		Yes	
Gentianaceae	<i>Centaurium erythraea</i> Rafn.	European centaury	NE		Yes	
	<i>Centaurium maritimum</i> (L.) Fritsch	Unpublished name	NE		Yes	
	<i>Centaurium pulchellum</i> (Swartz) Druce subsp. <i>pulchellum</i>	Unpublished name	LC		Yes	
	<i>Cicendia filiformis</i> (L.) Delarbre	Yellow Centaury	NE		Yes	
Geraniaceae	<i>Erodium cicutarium</i> (L.) L'Hér.	Redstem filaree	NE		Yes	
	<i>Geranium molle</i> L.	Dovefoot Geranium	NE		Yes	
	<i>Erodium moschatum</i> (L.) L'Hér.	Filaree	NE		Yes	
	<i>Geranium purpureum</i> Vill.	Little Robin	NE		Yes	
Guttiferae	<i>Hypericum humifusum</i> L.	Trailing St John's wort	NE	RR	Yes	
	<i>Hypericum perforatum</i> L. subsp. <i>angustifolium</i> (DC.) A. Fohlich	Perforate St John's-wort	NE		Yes	
	<i>Hypericum tomentosum</i> L.	Unpublished name	NE		Yes	
Hyacinthaceae	<i>Ornithogalum arabicum</i> L.	Star-of-Bethlehem	NE		Yes	
Hypolepidaceae	<i>Pteridium aquilinum</i> (L.) Kuhn	Common bracken	NE		Yes	
Juncaceae	<i>Juncus bufonius</i> L.	Toad rush	LC		Yes	
	<i>Juncus bulbosus</i> L.	Bulbous Rush	LC	RR	Yes	
	<i>Juncus capitatus</i> Weigel.	Leafybract dwarf rush	NE		Yes	
	<i>Juncus effusus</i> L.	Common rush	LC		Yes	
	<i>Juncus foliosus</i> Desf.	Leafy Rush	NE		Yes	
	<i>Juncus hybridus</i> Brot.	Hybrid Toad Rush	LC		Yes	
	<i>Juncus striatus</i> Schousboe ex E. Meyer	Unpublished name	LC		Yes	
	<i>Luzula forsteri</i> (Sm.) DC.	Southern Woodrush	DD	R?	Yes	
Labiatae	<i>Lavandula stoechas</i> L. subsp. <i>Stoechas</i>	Spanish lavender	NE		Yes	
	<i>Marrubium vulgare</i> L.	White Horehound	NE		Yes	
	<i>Mentha pulegium</i> L.	Pennyroyal	LC		Yes	
	<i>Mentha suaveolens</i> Ehrh.	Apple mint	LC		Yes	
	<i>Prunella vulgaris</i> L.	Unpublished name	NE		Yes	
	<i>Satureja nepeta</i> (L.) Scheele	Unpublished name	NE		Yes	
	<i>Stachys arvensis</i> (L.) L.	Field woundwort	NE		Yes	
	<i>Stachys officinalis</i> (L.) Trevisan subsp. <i>algeriensis</i> (De Noé) Franco	Purple betony	NE	RR	Yes	

Family	Genus/Species	Common Name	IUCN Red List	Conservation Status in Morocco	Jbel Sendouq, 2010	PL Alignment, 2015
	<i>Teucrium afrum</i> (Emberger & Maire) Pau & Font Quer subsp. <i>afrum</i> ®	Unpublished name	NE	R	Yes	
	<i>Teucrium fruticans</i> L.	Unpublished name	NE		Yes	
	<i>Thymus riatarum</i> Humbert & Maire	Unpublished name	NE		Yes	Yes
Liliaceae	<i>Gagea elliptica</i> (A. Terrac.) Prain	Yellow star-of-Bethlehem	NE	R?	Yes	
Linaceae	<i>Linum bienne</i> Miller	Pale Flax	NE		Yes	
	<i>Linum maritimum</i> Boiss. & Reuter	Strand-Lein	V?		Yes	
Lythraceae	<i>Lythrum junceum</i> Banks & Solander	Loosestrife	LC		Yes	
Myrtaceae	<i>Eucalyptus</i> sp. (2 species)	Eucalyptus	No Native		Yes	
	<i>Myrtus communis</i> L. subsp. <i>Communis</i>	Common myrtle	NE		Yes	
Oleaceae	<i>Fraxinus angustifolia</i> Vahl	Narrow-leaved Ash	NE		Yes	
	<i>Olea europaea</i> L. subsp. <i>oleaster</i> (Hoffmanns. & Link) Negodi	Common olive	NE		Yes	Yes
	<i>Phillyrea angustifolia</i> L.	Narrow-leaved mock privet	NE		Yes	
	<i>Phillyrea latifolia</i> L.	Green Olive Tree	NE		Yes	
Orchidaceae	<i>Epipactis helleborine</i> (L.) Crantz subsp. <i>tremolsii</i> (Pau) E. Klein	Helleborine	LC		Yes	
	<i>Neotinea maculata</i> (Desf.) Stearn	Magairín glas	NE		Yes	
	<i>Serapias parviflora</i> Parl	Small-flowered Serapias	NE		Yes	
Orobanchaceae	<i>Nothobartsia aspera</i> (Brot.) Bolliger & Molau	Unpublished name	NE	RR	Yes	
	<i>Odontites viscosus</i> (L.) Clairv. subsp. <i>australis</i> (Boiss.) Maire	Unpublished name	NE	RR	Yes	
Osmundaceae	<i>Osmunda regalis</i> L.	Royal fern	LC	V	Yes	
Oxalidaceae	<i>Oxalis corniculata</i> L.	Creeping woodsorrel	NE		Yes	
Papaveraceae	<i>Fumaria sepium</i> Boiss. & Reuter	Unpublished name	NE		Yes	
Pinaceae	<i>Pinus pinaster</i> Aiton	Cluster pine	LC		Yes	Yes
Plantaginaceae	<i>Plantago benisnassenii</i> Romo & al.	Unpublished name	NE		Yes	
	<i>Plantago coronopus</i> L.	Unpublished name	NE		Yes	
	<i>Plantago coronopus</i> L. subsp. <i>Cornopus</i>	Unpublished name	NE		Yes	
	<i>Plantago lagopus</i> L.	Unpublished name	NE		Yes	
	<i>Plantago serraria</i> L.	Toothed Plantain	NE		Yes	
Poaceae	<i>Agrostis curtisii</i> Kerguélen	Colonial bent	NE	RR	Yes	
	<i>Aira uniaristata</i> Lag. & Rodr.	Unpublished name	NE		Yes	

Family	Genus/Species	Common Name	IUCN Red List	Conservation Status in Morocco	Jbel Sendouq, 2010	PL Alignment, 2015
	<i>Anisantha madritensis</i> (L.) Nevski	Compact brome	NE		Yes	
	<i>Anisantha rigida</i> (Roth) Hyl.	Unpublished name	NE		Yes	
	<i>Anisantha tectorum</i> (L.) Nevski	Unpublished name	NE		Yes	
	<i>Anthoxanthum ovatum</i> Lag.	Unpublished name	NE		Yes	
	<i>Arrhenatherum album</i> (Vahl) W.D. Clayton	Unpublished name	NE		Yes	
	<i>Avena barbata</i> Pott ex Link	Slender wild oat	NE		Yes	
	<i>Avenula marginata</i> (Love) Holub subsp. <i>albinervis</i> (Boiss.) Romero Zarco	Unpublished name	NE		Yes	
	<i>Briza maxima</i> L.	Great quaking grass	NE		Yes	
	<i>Briza minor</i> L.	Lesser quaking grass	NE		Yes	
	<i>Brachypodium phoenicoides</i> (L.) Roemer & Schultes	Purple false brome	NE		Yes	
	<i>Brachypodium sylvaticum</i> (Huds.) P. Beauv.	Slender false brome	NE		Yes	
	<i>Cynodon dactylon</i> (L.) Pers.	Bermuda grass	NE		Yes	
	<i>Cynosurus echinatus</i> L.	Bristly dogtail grass	NE		Yes	
	<i>Dactylis glomerata</i> L.	Cock's-foot	NE		Yes	
	<i>Dactylis glomerata</i> L. subsp. <i>hispanica</i> (Roth) Nyman	Cock's-foot	NE		Yes	
	<i>Dactylis glomerata</i> L. subsp. <i>juncinella</i> (Bory) Stebbins & Zohary	Cock's-foot	NE		Yes	
	<i>Danthonia decumbens</i> (L.) DC.	Common heathgrass	NE	RR	Yes	
	<i>Festuca caerulescens</i> Desf.	Unpublished name	NE		Yes	
	<i>Gastridium phleoides</i> (Nees & Meyen) C. E. Hubb.	Unpublished name	NE		Yes	
	<i>Gastridium ventricosum</i> (Gouan) Schinz & Thell.	Nit grass	NE		Yes	
	<i>Gaudinia fragilis</i> (L.) P. Beauv.	French Oat-grass	NE		Yes	
	<i>Holcus lanatus</i> L.	Yorkshire fog	NE		Yes	
	<i>Hordeum murinum</i> L. subsp. <i>leporinum</i> (Link) Arcang.	False barley	NE		Yes	
	<i>Lolium rigidum</i> Gaudin	Rigid Ryegrass	NE		Yes	
	<i>Melica minuta</i> L. subsp. <i>Minuta</i>	Unpublished name	NE		Yes	
	<i>Neoschischkinia pourrettii</i> (Willd.) Valdés & H. Scholz	Unpublished name	NE		Yes	
	<i>Neoschischkinia reuteri</i> (Boiss.) Valdés & H. Scholz	Unpublished name	NE		Yes	
	<i>Poa annua</i> (L.) H. Scholz	Meadow grass	NE		Yes	
	<i>Poa infirma</i> (Kunth) H. Scholz	Early-Meadow grass	NE		Yes	
	<i>Rostraria salzmännii</i> (Boiss. & Reuter) Holub	Annual June Grass	NE		Yes	



Family	Genus/Species	Common Name	IUCN Red List	Conservation Status in Morocco	Jbel Sendouq, 2010	PL Alignment, 2015
	<i>Trachynia distachya</i> (L.) Link	Purple false brome	NE		Yes	
	<i>Triplachne nitens</i> (Guss.) Link	Shinig nit-grass	NE		Yes	
	<i>Vulpia bromoides</i> (L.) Gay	Barren fescue	NE		Yes	
	<i>Vulpia geniculata</i> (L.) Link subsp. <i>pauana</i> (Font Quer) Maire	Unpublished name	NE	RR	Yes	
Polygalaceae	<i>Polygala baetica</i> Willk.	Unpublished name	NE	R?	Yes	
Polygonaceae	<i>Rumex bucephalophorus</i> L. subsp. <i>Bucephalophorus</i>	Unpublished name	NE	RR	Yes	
	<i>Rumex bucephalophorus</i> L. subsp. <i>gallicus</i> (Steinh.) Rich. f.	Unpublished name	NE		Yes	
	<i>Rumex conglomeratus</i> Murray	Clustered Dock	NE		Yes	
	<i>Rumex pulcher</i> L.	Fiddle dock	NE		Yes	
Primulaceae	<i>Anagallis arvensis</i> L.	Red pimpernel	NE		Yes	
	<i>Anagallis arvensis</i> L. subsp. <i>Arvensis</i>	Red pimpernel	NE		Yes	
	<i>Anagallis arvensis</i> L. subsp. <i>latifolia</i> (L.) Arcangeli	Red pimpernel	NE		Yes	
	<i>Anagallis arvensis</i> L. subsp. <i>parviflora</i> (Hoffmanns. & Link) Arcangeli	Red pimpernel	NE		Yes	
	<i>Anagallis crassifolia</i> Thore	Unpublished name	NT	R	Yes	
	<i>Asterolinum linum-stellatum</i> (L.) Duby	Unpublished name	NE		Yes	
	<i>Samolus valerandi</i> L.	Brookweed	LC		Yes	
Ranunculaceae	<i>Delphinium staphisagria</i> L.	Unpublished name	NE	R	Yes	
	<i>Ranunculus arvensis</i> L.	Unpublished name	NE		Yes	
	<i>Ranunculus macrophyllus</i> Desf.	Unpublished name	NE		Yes	
	<i>Ranunculus parviflorus</i> L.	Unpublished name	NE		Yes	
	<i>Ranunculus spicatus</i> Desf.	Unpublished name	NE		Yes	
Resedaceae	<i>Sesamoides purpurascens</i> (L.) G. Lopez	Unpublished name	NE		Yes	
Rosaceae	<i>Agrimonia eupatoria</i> L. subsp. <i>Eupatoria</i>	Unpublished name	NE		Yes	
	<i>Crataegus monogyna</i> Jacq.	Hawthorn	NE		Yes	
	<i>Potentilla erecta</i> (L.) Rausch	Unpublished name	NE	R?	Yes	
	<i>Rubus ulmifolius</i> Schott.	Elmleaf blackberry	NE		Yes	
	<i>Sanguisorba minor</i> Scop.	Small burnet	NE		Yes	
Rubiaceae	<i>Asperula hirsuta</i> Desf.	Unpublished name	NE		Yes	
	<i>Galium murale</i> (L.) All.	Tiny bedstraw	NE		Yes	
	<i>Galium parisiense</i> L.	Wall bedstraw	NE		Yes	
	<i>Galium scabrum</i> L.	Unpublished name	NE		Yes	

Family	Genus/Species	Common Name	IUCN Red List	Conservation Status in Morocco	Jbel Sendouq, 2010	PL Alignment, 2015
	<i>Rubia peregrina</i> L.	Wild Madder	NE		Yes	
Scrophulariaceae	<i>Kickxia cirrhosa</i> (L.) Fritsch	Unpublished name	NE	R?	Yes	
	<i>Kickxia spuria</i> (L.) Dumort	Unpublished name	NE		Yes	
	<i>Myoporum laetum</i> G. Forst.	Unpublished name	NE		Yes	
	<i>Pedicularis sylvatica</i> L.subsp. <i>lusitanica</i> (Hoffmanns. & Link) Coutinho	Common lousewort	NE	RR	Yes	
	<i>Scrophularia laxiflora</i> Lange	Figwort	NE		Yes	
	<i>Veronica cymbalaria</i> Bodard	Pale Speedwell	NE		Yes	
Selaginellaceae	<i>Selaginella denticulata</i> (L.) Spring	Mediterranean Clubmoss	NE		Yes	
Smilacaceae	<i>Smilax aspera</i> L.	Rough bindweed	NE		Yes	
	<i>Smilax aspera</i> L. var. <i>altissimus</i> Moris & de Not.	Rough bindweed	NE		Yes	
	<i>Smilax aspera</i> L. var. <i>aspera</i>	Rough bindweed	NE		Yes	
Solanaceae	<i>Solanum nigrum</i> L.	Black nightshade	NE		Yes	
	<i>Solanum sodomaeum</i> L.	Devil's apple	NE		Yes	
Tamaricaceae	<i>Tamarix africana</i> Poiret	African tamarisk	NE		Yes	
Thymelaeaceae	<i>Daphne gnidium</i> L.	Flax-leaved daphne	NE		Yes	
	<i>Thymelaea villosa</i> (L.) Endl.	Unpublished name	NE	RR	Yes	
Umbelliferae	<i>Apium repens</i> (Jacq.) Koch	Creeping marshwort	NE		Yes	
	<i>Bunium alpinum</i> Wadst & Kit. subsp. <i>atlanticum</i> Maire	Unpublished name	NE		Yes	
	<i>Bupleurum foliosum</i> Salzm. ex DC.	Unpublished name	NE	RR	Yes	
	<i>Conopodium marianum</i> Lange	Unpublished name	NE	R	Yes	
	<i>Daucus carota</i> L.subsp. <i>Carota</i>	Wild carrot	DD		Yes	
	<i>Elaeoselinum foetidum</i> (L.) Boiss.	Unpublished name	NE		Yes	
	<i>Eryngium dilatatum</i> Lam.	Sea holly	NE	RR	Yes	
	<i>Eryngium tricuspdatum</i> L. subsp. <i>Tricuspdatum</i>	Unpublished name	NE		Yes	
	<i>Oenanthe crocata</i> L.	Water Dropwort	NE		Yes	
Urticaceae	<i>Oenanthe globulosa</i> L.	Unpublished name	LC		Yes	
	<i>Parietaria judaica</i> L.	Unpublished name	NE		Yes	
Valerianaceae	<i>Urtica membranacea</i> Poiret	Membranous Nettle	NE		Yes	
	<i>Centranthus calcitrapae</i> (L.) Dufr. subsp. <i>Calcitrapae</i>	Unpublished name	NE		Yes	
	<i>Fedia cornucopiae</i> (L.) Gaertn.	Unpublished name	NE		Yes	
	<i>Valerianella eriocarpa</i> Desv.	Italian Corn Salad	NE		Yes	

Family	Genus/Species	Common Name	IUCN Red List	Conservation Status in Morocco	Jbel Sendouq, 2010	PL Alignment, 2015
Viburnaceae	Viburnum tinus L.	Unpublished name	NE		Yes	
Violaceae	Viola canina L.	Dog Violet	NE	RR	Yes	



### الملحق 3. الأنواع HERPETOFAUNA المحددة ضمن في Jbel SENDOUQ

IUCN RED LIST

Described in Annex 2

الجدول 1. - 2- الأنواع Herpetofauna الواقعة ضمن منطقة الدراسة.

Species	Common Name	IUCN Red List	Conservation Status in Morocco
<b>Amphibians</b>			
<i>Bufo mauritanicus</i>	Mauritanian Toad	LC	-
<i>Discoglossus scovazzi</i>	Discoglosse à ventre blanc	LC	-
<i>Hyla meridionalis</i>	Mediterranean Tree Frog	LC	-
<i>Pelophylax saharicus</i>	Sahara Frog	LC	-
<i>Salamandra algira</i>	North African Fire Salamander	V	-
<b>Reptiles</b>			
<i>Acanthodactylus erythrurus</i>	Spiny-footed Lizard	LC	-
<i>Agama impalearis</i>	Bibron's Agama	LC	NCS
<i>Blanus tingitanus</i>	Amphisbène cendré du nord du Maroc	LC	-
<i>Chalcides colosii</i>	Riffian Skink	LC	-
<i>Chalcides pseudostratus</i>	Moroccan Three-toed Skink	NT	-
<i>Chamaeleo chamaeleon</i>	Mediterranean Chameleon	LC	-
<i>Coronella girondica</i>	Southern Smooth Snake	LC	-
<i>Daboia mauritanica</i>	Moorish Viper	NT	NCS
<i>Hemorrhois hippocrepis</i>	Horseshoe Whip Snake	LC	-
<i>Macroprotodon brevis</i>	False Smooth Snake	NT	-
<i>Malpolon monspessulanus</i>	Montpellier Snake	LC	-
<i>Mauremys leprosa</i>	Unpublished name	NE	-
<i>Natrix maura</i>	Viperine Snake	LC	-
<i>Podarcis vaucheri</i>	Unpublished name	LC	-
<i>Psammmodromus algirus</i>	Algerian Psammmodromus	LC	-
<i>Tarentola mauritanica</i>	Common Wall Gecko	LC	-
<i>Testudo graeca</i>	Spur-thighed Tortoise	V	-
<i>Timon tangitanus</i>	Lézard Ocellé du Atlas	LC	NCS
<i>Trogonophis wiegmanni</i>	Checkerboard Worm Lizard	LC	-
<i>Vipera latastei</i>	Lataste's Viper	V	-

**NCS: National Conservation Status.**

## الملحق 4 أنواع من الطيور المحددة ضمن في Jbel SENDOUQ

### IUCN RED LIST

Described in Annex 2

### BIRDS DIRECTIVE

**Directive 2009/147/EC** of the European Parliament and of the Council of 30 November 2009 on the conservation of wild birds (this is the codified version of Directive 79/409/EEC as amended) is the EU's oldest piece of nature legislation and one of the most important, creating a comprehensive scheme of protection for all wild bird species naturally occurring in the Union. It was adopted unanimously by the Members States in 1979 as a response to increasing concern about the declines in Europe's wild bird populations resulting from pollution, loss of habitats as well as unsustainable use. It was also in recognition that wild birds, many of which are migratory, are a shared heritage of the Member States and that their effective conservation required international co-operation.

The species listed in Annex I of the Directive are the subject of special conservation measures to ensure their survival and reproduction in their area of distribution. These measures shall take account of:

- Species in danger of extinction;
- Species vulnerable to specific changes in their habitat;
- Species considered rare because of small populations or restricted local distribution;
- Other species requiring attention.

### PHENOLOGY STATUS:

- MP: Passage Migrant
- H: Wintering
- A: Accidental
- ns: Present all year around, including Breeding

- nm: Breeding range, abandoned in winter
- no: Breeding occasionally
- npi & npa: Breeding not confirmed
- nc : Confirmed Breeding

الجدول 1. 3- أنواع الطيور التي تقع داخل منطقة الدراسة.

Species	Common Name	IUCN Red List	Birds Directive - Annex 1	Phenology Status							
				Annex 7 (EIA)			Annex 6 (EIA)				
				Migratory (MP)	Wintering (H)	Accidental (A)	ns	nm	npa	nc	npi
<i>Ardeola ralloides</i>	Squacco Heron	LC	X	x							
<i>Accipiter gentilis</i>	Northern Goshawk	LC			x		x				x
<i>Accipiter nisus</i>	Eurasian Sparrowhawk	LC			x		x			x	
<i>Acrocephalus schoenobaenus</i>	Sedge Warbler	LC		x							
<i>Acrocephalus scirpaceus</i>	Eurasian Reed-warbler	LC		x							
<i>Alauda arvensis</i>	Eurasian Skylark	LC			x						
<i>Alectoris barbara</i>	Barbary Partridge	LC	X				x			x	
<i>Anthus campestris</i>	Tawny Pipit	LC	X	x				x		x	
<i>Anthus pratensis</i>	Meadow Pipit	LC		x	x						
<i>Anthus trivialis</i>	Tree Pipit	LC		x							
<i>Apus affinis</i>	Little Swift	LC		x							
<i>Apus apus</i>	Common Swift	LC		x				x		x	
<i>Apus melba</i>	Alpine Swift	LC		x							
<i>Apus pallidus</i>	Pallid Swift	LC		x				x		x	
<i>Aquila adalberti</i>	Spanish Imperial Eagle	V	X			x					
<i>Ardea cinerea</i>	Grey Heron	LC		x	x						
<i>Asio flammeus</i>	Short-eared Owl	LC	X	x	x						
<i>Asio otus</i>	Northern Long-eared Owl	LC					x			x	
<i>Athene noctua</i>	Little Owl	LC					x			x	



Species	Common Name	IUCN Red List	Birds Directive - Annex 1	Phenology Status							
				Annex 7 (EIA)			Annex 6 (EIA)				
				Migratory (MP)	Wintering (H)	Accidental (A)	ns	nm	npa	nc	npi
<i>Bubulcus ibis</i>	Cattle Egret	LC			x		x				x
<i>Burhinus oedichnemus</i>	Eurasian Thick-knee	LC	X				x		x		
<i>Buteo buteo</i>	Eurasian Buzzard	LC			x						
<i>Buteo rufinus</i>	Long-legged Buzzard	LC	X				x		x		
<i>Calandrella brachydactyla</i>	Greater Short-toed Lark	LC	X	x							
<i>Calandrella cinerea</i>	Red-capped Lark	LC						x			x
<i>Caprimulgus europaeus</i>	European Nightjar	LC	X	x				x			x
<i>Caprimulgus ruficollis</i>	Red-necked Nightjar	LC		x	x			x			x
<i>Caprimulgus ruficollis</i>	Red-necked Nightjar	LC									
<i>Carduelis cannabina</i>	Eurasian Linnet	LC				x		x			x
<i>Carduelis carduelis</i>	European Goldfinch	LC				x		x			x
<i>Carduelis chloris</i>	European Greenfinch	LC				x					
<i>Carduelis spinus</i>	Eurasian Siskin	LC				x					
<i>Cercotrichas galactotes</i>	Rufous-tailed Scrub-robin	LC		x					x	x	
<i>Cettia cetti</i>	Cetti's Warbler	LC						x			x
<i>Chloris chloris</i>	European Greenfinch	LC						x			x
<i>Ciconia ciconia</i>	White Stork	LC	X	x	x				x		x
<i>Ciconia nigra</i>	Black Stork	LC	X	x							
<i>Circaetus gallicus</i>	Short-toed Snake-eagle	LC	X	x					x		x
<i>Circus aeruginosus</i>	Western Marsh-harrier	LC	X	x	x			x			x
<i>Circus cyaneus</i>	Hen Harrier	LC	X			x					
<i>Circus pygargus</i>	Montagu's Harrier	LC	X	x							
<i>Cisticola juncidis</i>	Zitting Cisticola	LC				x		x			x
<i>Clamator glandarius</i>	Great Spotted Cuckoo	LC		x							
<i>Coccothraustes coccothraustes</i>	Hawfinch	NE				x					
<i>Columba livia</i>	Rock Dove	LC						x			x
<i>Columba oenas</i>	Stock Dove	LC				x					

Species	Common Name	IUCN Red List	Birds Directive - Annex 1	Phenology Status						
				Annex 7 (EIA)			Annex 6 (EIA)			
				Migratory (MP)	Wintering (H)	Accidental (A)	ns	nm	npa	nc
<i>Columba palumbus</i>	Wood Pigeon	LC			x		x			x
<i>Coracias garrulus</i>	European Roller	NT	X	x				x		x
<i>Corvus corax</i>	Common Raven	LC					x			x
<i>Corvus monedula</i>	Eurasian Jackdaw	LC					x		x	
<i>Coturnix coturnix</i>	Common Quail	LC		x				x		x
<i>Cuculus canorus</i>	Common Cuckoo	LC		x				x		x
<i>Cyanistes teneriffae</i>	African blue tit	LC					x			x
<i>Delichon urbica</i>	Northern House-martin	LC		x				x		x
<i>Dendrocopos major</i>	Great Spotted Woodpecker	LC					x			x
<i>Egretta garzetta</i>	Little Egret	LC		x	x					
<i>Elanus caeruleus</i>	Black-winged Kite	LC	X				x			x
<i>Emberiza cia</i>	Rock Bunting	LC					x			
<i>Emberiza cirius</i>	Cirl Bunting	LC					x		x	
<i>Emberiza hortulana</i>	Ortolan Bunting	LC	X	x						
<i>Emberiza sahari</i>	House bunting	NE					x			x
<i>Erithacus rubecula</i>	European Robin	LC					x			x
<i>Erithacus rubecula</i>	European Robin	LC				x				
<i>Falco biarmicus</i>	Lanner Falcon	LC	X				x			x
<i>Falco columbarius</i>	Common Kestrel	LC	X			x				
<i>Falco naumanni</i>	Lesser Kestrel	LC	X	x				x		x
<i>Falco peregrinus</i>	Peregrine Falcon	LC	X				x			x
<i>Falco subbuteo</i>	Eurasian Hobby	LC		x				x		x
<i>Falco tinnunculus</i>	Common Kestrel	LC		x	x		x		x	
<i>Falco tinnunculus</i>	Common Kestrel	LC								
<i>Ficedula hypoleuca</i>	(European Pied Flycatcher	LC		x						
<i>Fringilla coelebs</i>	Eurasian Chaffinch	LC				x	x			x
<i>Fringilla montifringilla</i>	Brambling	LC				x				

Species	Common Name	IUCN Red List	Birds Directive - Annex 1	Phenology Status						
				Annex 7 (EIA)			Annex 6 (EIA)			
				Migratory (MP)	Wintering (H)	Accidental (A)	ns	nm	npa	nc
<i>Galerida cristata</i>	Crested Lark	LC					x			x
<i>Galerida theklae</i>	Thekla Lark	LC	X				x			x
<i>Grus grus</i>	Common Crane	LC	X		x					
<i>Gyps fulvus</i>	Griffon Vulture	LC		x						
<i>Hieraetus fasciatus</i>	Bonelli's Eagle	LC	X				x			x
<i>Hieraetus pennatus</i>	Booted Eagle	LC	X	x				x		x
<i>Hippolais opaca</i>	Western Olivaceous Warbler	LC		x				x		x
<i>Hippolais polyglotta</i>	Melodious Warbler	LC		x				x	x	
<i>Hirundo daurica</i>	Red-rumped Swallow	LC		x				x		x
<i>Hirundo rustica</i>	Barn Swallow	LC		x	x			x		x
<i>Jynx torquilla</i>	Eurasian Wryneck	LC		x	x					
<i>Lanius meridionalis</i>	Southern Grey Shrike	NE			x		x		x	
<i>Lanius senator</i>	Woodchat Shrike	LC		x				x	x	
<i>Larus michaelis</i>	Yellow legged Gull	LC								
<i>Limosa limosa</i>	Black-tailed Godwit	LC								
<i>Locustella naevia</i>	Common Grasshopper-warbler	LC		x	x					
<i>Loxia curvirostra</i>	Red Crossbill	LC			x					
<i>Lullula arborea</i>	Wood Lark	LC	X				x		x	
<i>Luscinia megarhynchos</i>	Common Nightingale	LC		x				x		x
<i>Luscinia svecica</i>	Bluethroat	LC	X	x	x					
<i>Melanocorypha calandra</i>	Calandra Lark	LC	X				x			x
<i>Merops apiaster</i>	European Bee-Eater	LC		x				x		x
<i>Miliaria calandra</i>	Corn Bunting	LC			x		x			x
<i>Milvus migrans</i>	Black Kite	LC	X	x				x		x
<i>Milvus milvus</i>	Red Kite	NT	X		x					
<i>Monticola saxatilis</i>	Rufous-tailed Rock-thrush	LC		x						
<i>Monticola solitarius</i>	Blue Rock-thrush	LC					x			x

Species	Common Name	IUCN Red List	Birds Directive - Annex 1	Phenology Status						
				Annex 7 (EIA)			Annex 6 (EIA)			
				Migratory (MP)	Wintering (H)	Accidental (A)	ns	nm	npa	nc
<i>Motacilla alba</i>	White Wagtail	LC		x	x					
<i>Motacilla cinerea</i>	Grey Wagtail	LC			x					
<i>Motacilla flava</i>	Yellow Wagtail	LC		x	x					
<i>Muscicapa striata</i>	Spotted Flycatcher	LC		x						
<i>Muscicapa striata</i>	Spotted Flycatcher	LC						x		x
<i>Neophron percnopterus</i>	Egyptian Vulture	EN	X	x						
<i>Nycticorax nycticorax</i>	Black-crowned Night-heron	LC	X	x						
<i>Oenanthe hispanica</i>	Black-eared Wheatear	LC		x				x		x
<i>Oenanthe leucura</i>	Black Wheatear	LC	X				x			
<i>Oenanthe oenanthe</i>	Northern Wheatear	LC		x						
<i>Oriolus oriolus</i>	Eurasian Golden Oriole	LC		x				x		x
<i>Otus scops</i>	Eurasian Scops-owl	LC		x				x		x
<i>Pandion haliaetus</i>	Osprey	LC	X	x	x					
<i>Parus major</i>	Great Tit	LC					x			x
<i>Passer domesticus</i>	House Sparrow	LC					x			x
<i>Passer hispaniolensis</i>	Spanish Sparrow	LC		x	x			x		x
<i>Pernis apivorus</i>	European Honey-buzzard	LC	X	x						
<i>Phoenicopterus roseus</i>	Flamingo	LC								
<i>Phoenicurus moussieri</i>	Moussier's redstart	LC								
<i>Phoenicurus ochruros</i>	Black Redstart	LC					x			
<i>Phoenicurus phoenicurus</i>	Common Redstart	LC		x						
<i>Phylloscopus bonelli</i>	Bonelli's Warbler	LC		x				x		x
<i>Phylloscopus collybita</i>	Common Chiffchaff	LC		x	x					
<i>Phylloscopus ibericus</i>	Iberian Chiffchaff	LC						x		x
<i>Phylloscopus sibilatrix</i>	Wood Warbler)	LC		x						
<i>Phylloscopus trochilus</i>	Willow Warbler	LC		x						
<i>Picus vaillantii</i>	Maghreb Green Woodpecker	LC					x			x



Species	Common Name	IUCN Red List	Birds Directive - Annex 1	Phenology Status							
				Annex 7 (EIA)			Annex 6 (EIA)				
				Migratory (MP)	Wintering (H)	Accidental (A)	ns	nm	npa	nc	npi
<i>Platalea leucordia</i>	Spoonbill	NE									
<i>Ptyonoprogne rupestris</i>	Eurasian Crag-martin	LC			x						
<i>Pycnonotus barbatus</i>	Common Bulbul	LC					x			x	
<i>Regulus ignicapillus</i>	Common firecrest	NE			x						
<i>Riparia riparia</i>	Sand Martin	LC		x							
<i>Saxicola rubetra</i>	Whinchat	LC		x							
<i>Saxicola torquata</i>	Common Stonechat	LC			x		x				x
<i>Scolopax rusticola</i>	Eurasian Woodcock	LC			x						
<i>Serinus serinus</i>	European Serin	LC			x		x				x
<i>Streptopelia decaocto</i>	Eurasian Collared-dove	LC					x			x	
<i>Streptopelia turtur</i>	European Turtle-dove	LC		x				x			x
<i>Strix aluco</i>	Tawny Owl	LC					x				x
<i>Sturnus unicolor</i>	Spotless Starling	LC					x				x
<i>Sturnus vulgaris</i>	Common Starling	LC			x						
<i>Sylvia atricapilla</i>	Blackcap	LC		x	x		x				x
<i>Sylvia borin</i>	Garden Warbler	LC		x							
<i>Sylvia cantillans</i>	Subalpine Warbler	LC		x							
<i>Sylvia communis</i>	Common Whitethroat	LC		x				x			x
<i>Sylvia conspicillata</i>	Spectacled Warbler	LC		x				x			x
<i>Sylvia hortensis</i>	Orphean Warbler	LC		x							
<i>Sylvia melanocephala</i>	Sardinian Warbler	LC			x		x				x
<i>Sylvia undata</i>	Dartford Warbler	NT	X		x		x				x
<i>Tchagra senegala</i>	Black-crowned Tchagra	LC					x				x
<i>Tetrax tetrax</i>	Little Bustard	NT	X		x		x				x
<i>Troglodytes troglodytes</i>	Winter Wren	LC					x				x
<i>Turdus iliacus</i>	Redwing	LC			x						
<i>Turdus merula</i>	Eurasian Blackbird	LC					x				x

Species	Common Name	IUCN Red List	Birds Directive - Annex 1	Phenology Status						
				Annex 7 (EIA)			Annex 6 (EIA)			
				Migratory (MP)	Wintering (H)	Accidental (A)	ns	nm	npa	nc
<i>Turdus philomelos</i>	Song Thrush	LC			x					
<i>Turdus viscivorus</i>	Turdus viscivorus	LC			x					
<i>Tyto alba</i>	Common Barn-owl	LC					x		x	
<i>Upupa epops</i>	Common Hoopoe	LC		x				x		x

الملحق 5 أنواع الخفافيش المحددة ضمن في Jbel SENDOUQ

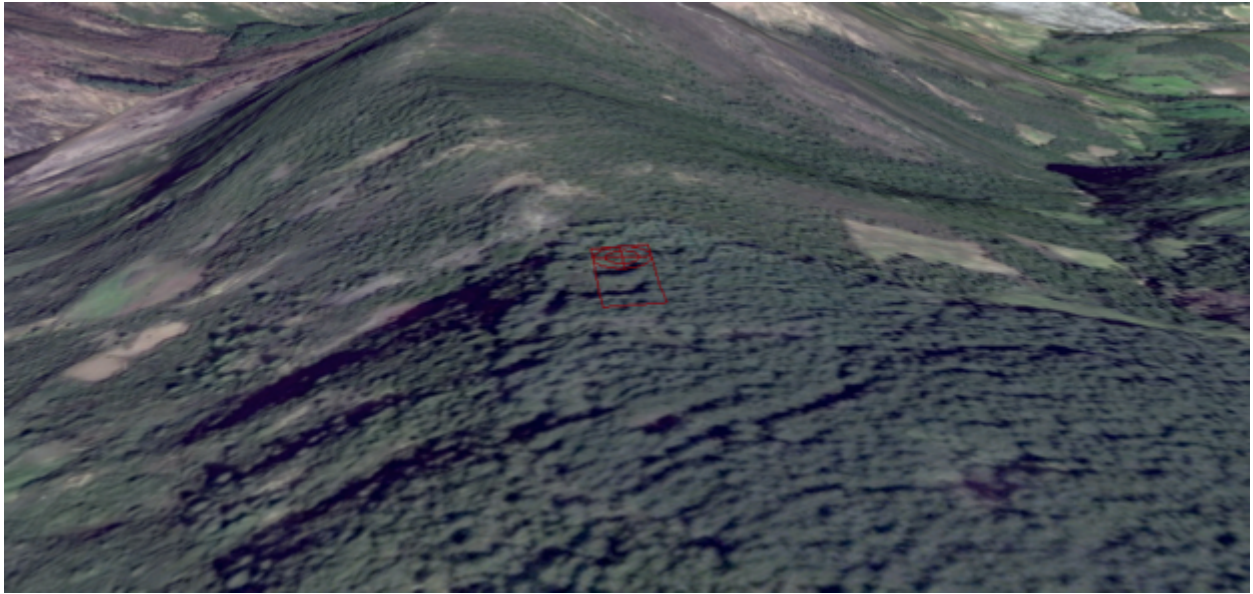
IUCN RED LIST  
Described in Annex 2

الجدول 1. أنواع الخفافيش -4 الواقعة ضمن منطقة الدراسة.

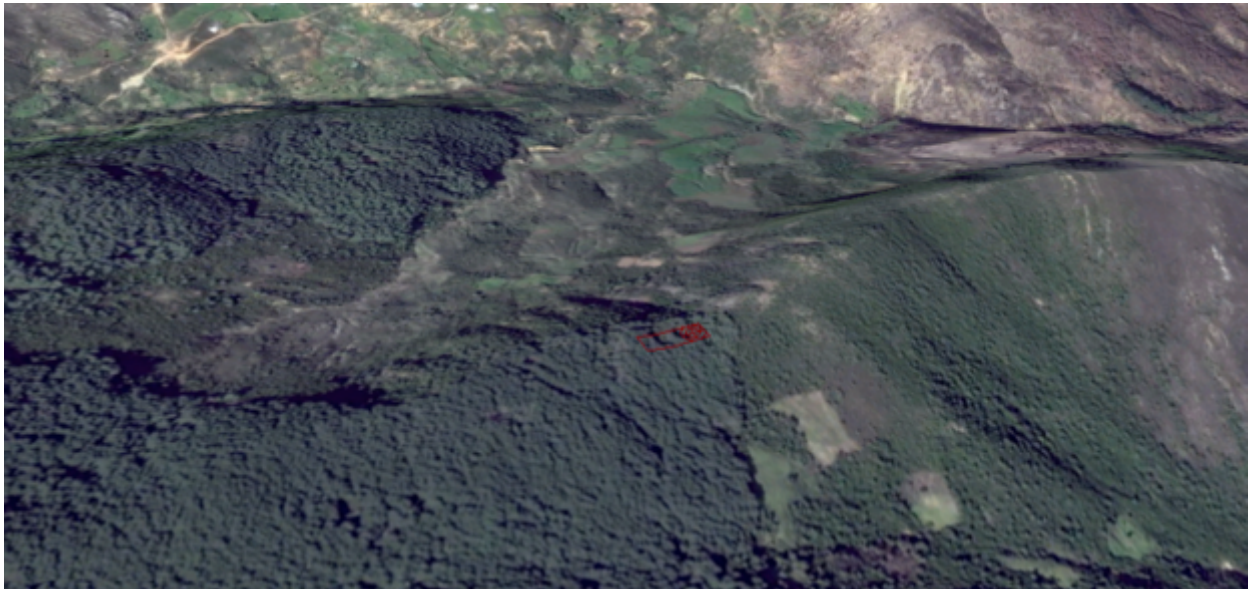
Species	Common Name	IUCN Red List	Conservation Status in Morocco	Status onsite
<i>Rhinolophus ferrumequinum</i>	Greater Horseshoe Bat	LC	-	Identified
<i>Rhinolophus hipposideros</i>	Lesser Horseshoe Bat	LC	-	Identified
<i>Rhinolophus euryale</i>	Mediterranean Horseshoe Bat	NT	-	Identified
<i>Rhinolophus mehelyi</i>	Mehely's Horseshoe Bat	V	-	Identified
<i>Hipposideros tephros</i>	Unpublished name	NE	-	Identified
<i>Myotis capaccinii</i>	Long-fingered Bat	V	-	Identified
<i>Myotis mystacinus</i>	Whiskered Myotis	LC	-	Unknown
<i>Myotis emarginatus</i>	Geoffroy's Bat	LC	-	Unknown
<i>Myotis punicus</i>	Maghreb Mouse-eared Bat	NT	-	Identified
<i>Pipistrellus pipistrellus</i>	Common Pipistrelle	LC	-	Identified
<i>Pipistrellus kuhlii</i>	Kuhl's Pipistrelle	LC	-	Identified
<i>Pipistrellus savii</i>	Savi's Pipistrelle	LC	-	Identified
<i>Nyctalus lasiopterus</i>	Giant Noctule	NT	-	Identified
<i>Nyctalus leisleri</i>	Lesser Noctule	LC	-	Unknown
<i>Eptesicus isabellinus</i>	Serotine	LC	-	Identified
<i>Barbastella barbastellus</i>	Western Barbastelle	NT	-	Unknown
<i>Plecotus gaisleri</i>	Unpublished name	NE	-	Unknown
<i>Miniopterus schreibersii</i>	Schreiber's Bent-winged Bat	NT	-	Identified
<i>Tadarida teniotis</i>	European Free-tailed Bat	LC	-	Unknown

الملحق 6، أرقام

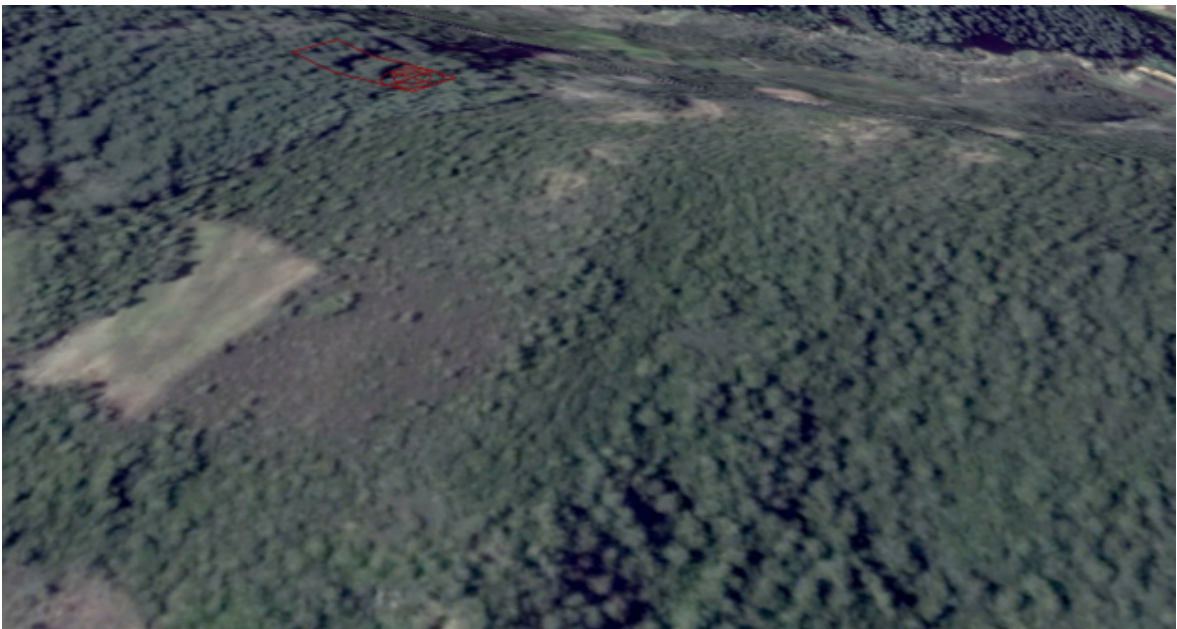
الرقم 9-10 V التوربينات تقع على غابة الصنوبر والمناطق المتاخمة لغابة بلوط الفلين، ينظر من الجنوب.



الرقم 9-20 V التوربينات تقع على غابة الصنوبر والمناطق المتاخمة لغابة بلوط الفلين، ينظر من الشرق.



الرقم 9-3 بلوط غابة بالقرب من التوربينات V10، وينظر من الشمال.





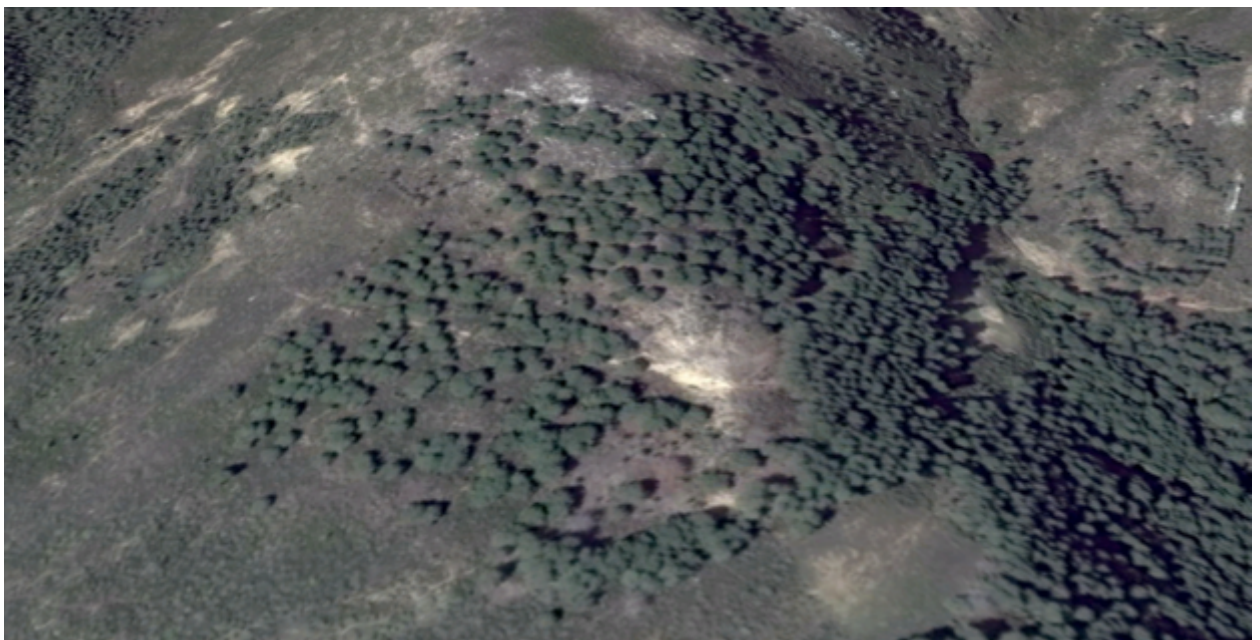
الرقم 9-4- V37 التوربينات تقع جزئيا على أشجار الفلين المتناثرة و MAQUIS الموانئ.



الرقم 9-5- V37 التوربينات تقع جزئيا على أشجار الفلين المتناثرة و MAQUIS الموانئ.



الرقم 9-6- اوك تقع الغابات حوالي 800M لتوربينات V37.



الملحق 7. الخرائط